

Waterproof BOX TERMINAL

BOXTS series

BOXTS-3, BOXTS-3A (with terminal block)

BOXTS-N, BOXTS-NA (without terminal block)

TOYOGI

RoHS
Compliant
RoHS2

IP67

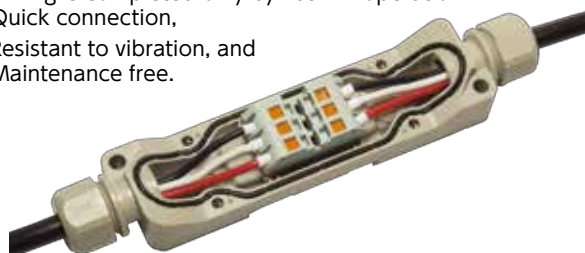
NEW



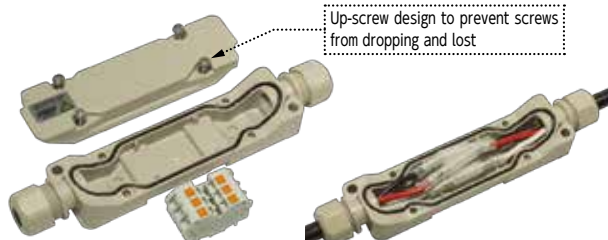
- ◆ Built-in terminal block is Push-In type
- ◆ Industry-minimum class width **27.5mm**
- ◆ The used resin is PBT with excellent oil resistance and chemical resistance.

Wiring

Wiring is completed only by Push-In operation.
Quick connection,
Resistant to vibration, and
Maintenance free.



Terminal block is detachable.
You can remove it as necessary and use it.



Terminal block model no: BVT5-3

Example of wiring with no terminal block

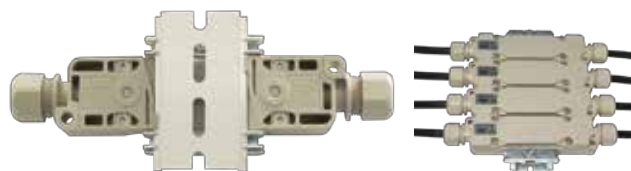
Up-screw design to prevent screws
from dropping and lost

Optional mounting method

Otherwise than a standard mounting method, you can
easily mount on an aluminum frame etc, by removing
the knockouts inside of the BOXTS-series.



Corresponding to DIN Rail.



Order format

BOXTS-※□

※=3, N (3: with terminal block / N: without terminal block)
□=Diameter of applicable cable ([Blank] or [A]) see below table



Screw-less design realizes
industry-minimum width **27.5mm**

Model No.	With/Without TB	Overall out side diameter of the applicable cable	Standard accessories	Mass
BOXTS-3	YES	φ3.5~φ7.3	sleeve φ5.3 (2PCS) Name label (1)	61g
BOXTS-3A		φ4.0~φ5.3 φ6.0~φ9.0	sleeve φ5.3 (2PCS) sleeve φ7.5 (2PCS) Name label (1)	59g
BOXTS-N		φ3.5~φ7.3	sleeve φ5.3 (2PCS)	53g
BOXTS-NA	NO	φ4.0~φ5.3 φ6.0~φ9.0	sleeve φ5.3 (2PCS) sleeve φ7.5 (2PCS)	51g

● Short Bar for COM (model no. SBVT5-3) is also available as an option.

TOYOGIKEN CO.,LTD.

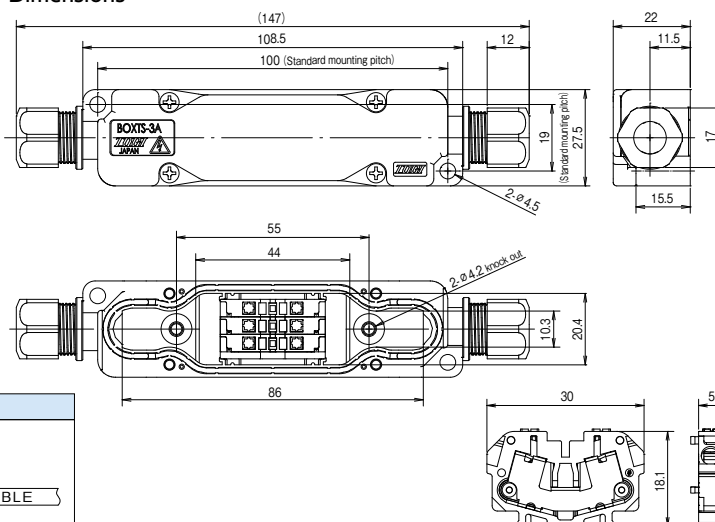
Specifications

Waterproof BOX TERMINAL **BOXTS**series

Rating

No. of poles	3poles
Rated voltage/ Rated current	250V · 15A
Insulation resistance	100MΩ or more (DC500V)
Withstand voltage	AC 2000V / min
Overall out side diameter of the applicable cable	BOXTS-3,-N : $\phi 3.5 \sim \phi 7.3$ BOXTS-3A,-NA : $\phi 4.0 \sim \phi 5.3$ $\phi 6.0 \sim \phi 9.0$
Ambient temperature	-25°C ~ +60°C (No freezing and condensations)
Protection Rating	IP67

Dimensions



Applicable ferrule and wire for terminal block

Ferrule	Standard	Solid
0.25mm~1.5mm / AWG24~AWG16 based on DIN46228-4	0.08mm~1.5mm / MAX AWG28~AWG16	$\phi 0.5 \sim \phi 1.6$

Wires with the coated outer diameter of $\phi 4$ or more can not be used.
Use ferrule properly under instruction of each maker

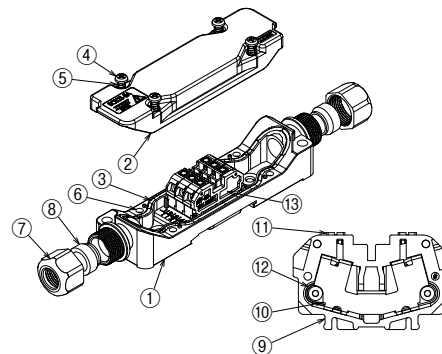
Materials

BOX

①Body	PBT
②Top cover	PBT
③Gasket	NBR
④Screw	SUS
⑤Spring	SUS
⑥Nut	Copper alloy
⑦Cap	PA
⑧Sleeve	NBR

Terminal Block

⑨Insulation body	PA
⑩Conductive plate	Copper
⑪Button	PA
⑫Spring	SUS
⑬End plate	PA



Operating precautions

- Remove the knock out when you use with aluminum frames.
- Remove the knock out with tools (shaft ϕ under 4mm) on a flat table.
- Use O-ring to keep BOXTS waterproof after removing knock out.
- Stopper needed to fix BOXTS on a mounting rail.
- Some types of fixing rail screws may be an obstacle to mounting BOXTS on a rail.
- Do not use outdoors and under the direct sunlight.

Please contact our technical support team for product inquiries.

P.T. Nikkatsu Electric Works

Jl. Cimuncang No. 70 Bandung 40125 Telp. (022) 720 8088 (6 Lines) Fax: 720 6956 - 727 6000

Website: <https://www.pt-nikkatsu.com> e-mail: marketing@pt-nikkatsu.com

TOGI TOYOGIKEN CO.,LTD.

<http://www.togi.co.jp> E-mail: info@togi.co.jp

Headquarters, Factory

4-8-7 Gongencho, Osachi, Okaya-shi, Nagano-ken, Japan 394-0081